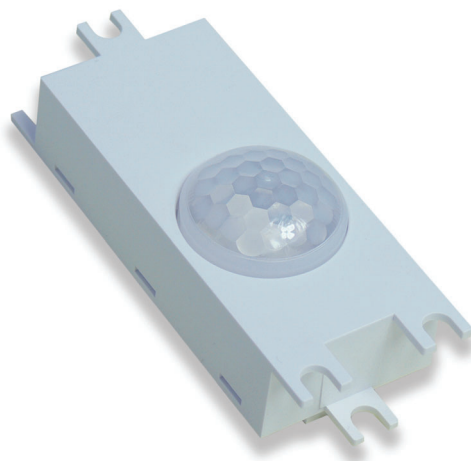


SPIU.6-L

LOW PROFILE DUAL BUS SENSOR

SPU.6-L LOW PROFILE DUAL BUS SENSOR

The SPU.6-L is a sophisticated intelligent universal sensor which combines high performance presence detection, light level sensing and infra-red control into one compact unit.



The sensor can either plug into an LCM's DALI line or E-Bus from which both power and communication are achieved. The sensor automatically identifies itself on either bus and continuously reports its status and current readings.

KEY FEATURES

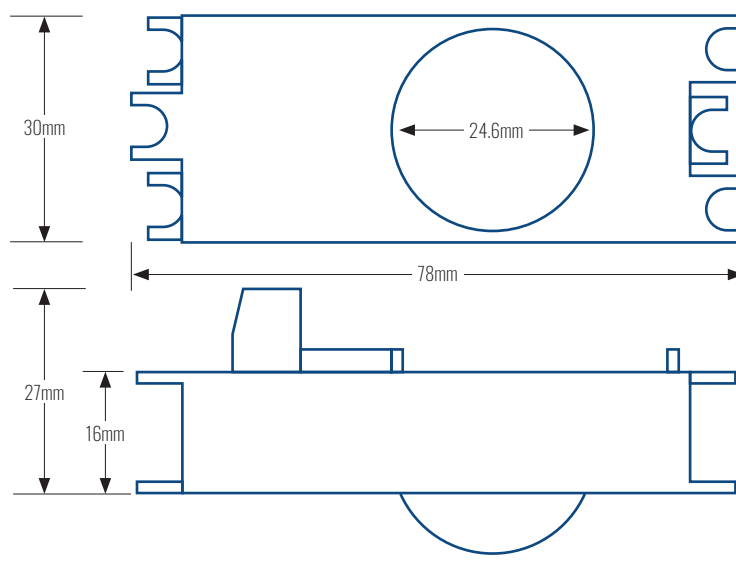
Addressable Intelligent Universal Sensor | Luminaire mountable | 360 degree PIR presence detection | Wide range linear photocell | Programmable infra-red receiver | Flexible configuration via SPECS Manager graphical software | Simple E-Bus or DALI connection | Self test LED indicator | Low profile compact design

TECHNICAL SPECIFICATION

SUPPLY | Two wire supply combined signal and supply connection via SPECS E-Bus or DALI

WEIGHT | 50g

INGRESS PROTECTION | 20



CIRCULAR CEILING FIXING HOLE

A final factory cut and finished hole is required for the lens to protrude through. The finished size of this hole must be no smaller than 25.0mm. For unimpeded operation of the lens the plate thickness should not exceed 2.5mm.

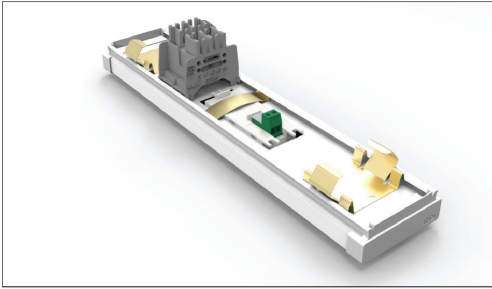


Photo © Ridi

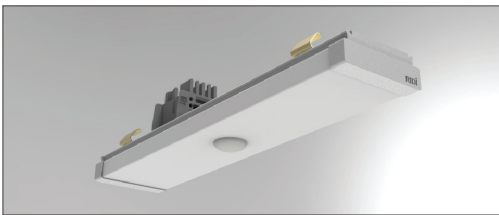


Photo © Ridi



CONTACT US

T | 01992 450126

E | SALES@SIMMTRONIC.COM

E | AFTERSALES@SIMMTRONIC.COM

W | WWW.SIMMTRONIC.COM

HQ | LONDON & SOUTH

WATERSIDE

CHARLTON MEAD LANE

HODDESDON, HERTFORDSHIRE

EN11 0QR

MIDLANDS & NORTH

BLOC

17 MARBLE STREET

MANCHESTER

M2 3AW

SIMMTRONIC